



# NEWCOMB CENTRAL SCHOOL DISTRICT

February 2024

## INSIDE THIS ISSUE:

|                           |       |
|---------------------------|-------|
| Superintendent News       | 1-4   |
| NYS to Focus on Reading   | 5     |
| Guidance Office News      | 6-7   |
| Menus                     | 8-9   |
| <b>Class News:</b>        |       |
| Fun with Fractions        | 10    |
| Speech & Language Skills  | 11    |
| Sports News               | 12-13 |
| Class of 2026 Fundraiser  | 14    |
| <b>In Other News:</b>     |       |
| Total Solar Eclipse Event | 15    |



## Secondary Thesis Research Investigative Projects

*A message from Superintendent Fisher*

The Thesis Research Investigative Project (TRIP) is an annual academic project at Newcomb that engages all secondary students. As part of the unique educational experience at Newcomb, TRIP takes a different form each year, but always includes the essential components of research, process, and presentation, along with a creative aspect. In line with our district's vision and mission, the TRIP experience not only aligns with the New York State Standards, but also provides students with a platform to showcase their knowledge and expertise on a specific topic to an audience of community members, family, and peers.

A project of such scale equips students for future success in college, their chosen careers and life in general. How? The project goes beyond simply researching and imparting content knowledge and places a strong emphasis on developing essential



## NO SCHOOL

February 19<sup>th</sup>-23<sup>rd</sup>  
Winter Recess

*Cont'd on page 2*

soft skills. Soft skills are non-technical abilities such as critical thinking, effective communication, problem solving, active listening and efficient time management. Soft skills enable an individual to work effectively with others as well as navigate various situations. TRIP embeds these skills by encouraging students to not only analyze and evaluate information, but to think creatively, propose solutions to problems and develop decision-making skills.

The TRIP experience helps students to develop social emotional skills such as self-management or the ability to regulate emotions. The project also assists students with goal setting and making responsible decisions. Other important social-emotional skills such as self-awareness or the ability to understand your own emotions and the ability to identify your own strengths and weaknesses are naturally addressed throughout the process.

In an effort to foster a supportive environment for students throughout the TRIP project, many adults in the school community work collaboratively to provide constructive feedback, actively listen to and engage students in encouraging dialogue. They also work to help students facilitate the development of time management and organizational skills. This is often illustrated through the implementation of strategies for setting deadlines, creating schedules and assisting students with prioritizing tasks.

The ten week long endeavor is a process and it all comes together beautifully!



**The big day!** After weeks of hard work and preparation the culminating experience is for students to showcase their work. The day is filled with formal presentations on stage, booth presentations, Trivia breaks and raffle prizes too! Student participation is at an all time high with positive and constructive feedback given from audience members and active engagement with each presenter during a Q & A session. Students are encouraged to ask higher level questions to those presenting. Generating higher level questions is a valuable skill that enhances students' understanding and critical thinking abilities. Dialogue between the speaker and the audience becomes more complex on a given topic and multiple perspectives can be shared to generate deeper connections.



*Booth Presentation*



*Stage Presentation*

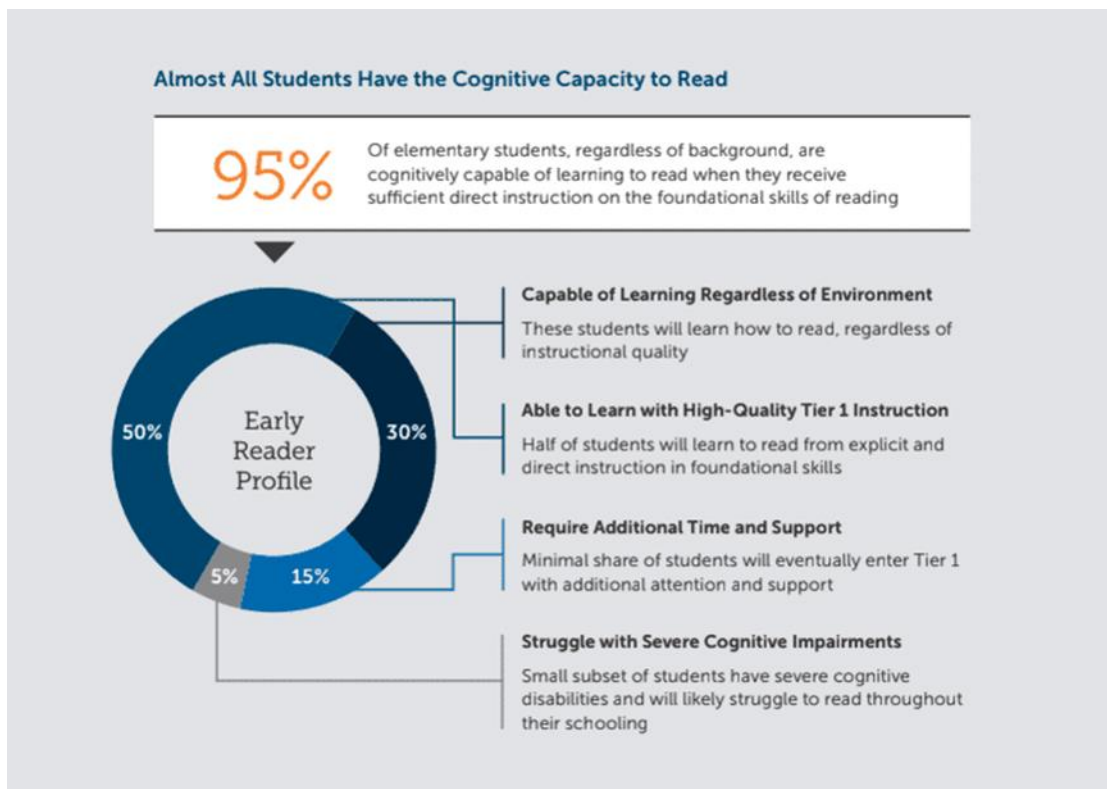


*Creative Projects*

Successful outcomes for the TRIP experience would not be possible without the organization and facilitation from members of the TRIP Committee as well as the support from the entire NCS faculty and staff. A very special thank you to everyone for helping our students to exceed our expectations and achieve their goal!

# New York State To Focus On The Science of Reading

*A message from PJ Mottsiff - Director of Curriculum and Instruction*



Research shows that the ability to read proficiently by third grade is a vital milestone that correlates strongly with a student’s future academic success. Unfortunately, students who do not achieve this proficiency are four times more likely to drop out of high school. Ninety-five percent of elementary students have the cognitive capacity to read. While only half of students will learn how to read regardless of the type of instruction they receive, it is critical to understand that many students need high-quality instruction in order to become successful readers, and for even more students, additional intensive support is needed.

Recognizing this issue, New York is now placing a heightened emphasis on early reading instruction informed by fifty years of scientific findings on how students actually learn to read. Referred to formally as the “Science of Reading,” this approach structures literacy teaching around six core components: oral language, phonological awareness, phonics, fluency, vocabulary, and comprehension.

To bolster teacher expertise in reading, Governor Kathy Hochul recently announced a \$10 million proposal for statewide training. The State has also mandated that all school districts align English Language Arts programs in grades Pre-K-12 to reflect this scientific research by September 2025.

This month Newcomb held an afternoon professional development session to introduce our elementary school teachers to the Science of Reading. The training discussed what it is, along with the expectations being set forth under New York state’s new policies. By ensuring a robust understanding of the Science of Reading and applying those learnings through curricular alignment pre-kindergarten-grade 12, our goal is for educators to be fully empowered in delivering best-practice literacy instruction in their classrooms.

# FROM THE GUIDANCE OFFICE

## CONGRATULATIONS SENIORS

**Logan Bush** has been accepted at SUNY Potsdam and he will be playing on their soccer team as well.

### SENIORS

1. All seniors going off to college will need to fill out the **FAFSA** ([www.fafsa.ed.gov](http://www.fafsa.ed.gov)) which began in December/January this school year. You can apply on-line, which saves a lot of time. Before you can do that **you and a parent** need to register for a ***FSA ID***. To get your ***FSA ID*** you can go to [fsaid.ed.gov](http://fsaid.ed.gov).
2. Make sure you have a copy of everything for your own records, **BEFORE** you mail it out. ***Be sure to check your college deadlines for financial aid forms!! YOU NEED TO APPLY FOR FINANCIAL AID EVERY YEAR!!!!***
3. If you have not done so already, you need to get your college applications ready to send out. The sooner the better!!
4. Parents of seniors: Please keep an eye out in the mail for scholarship opportunities. I usually send them out in the winter/spring. I send all scholarship opportunities home to each senior's family. You will need to read the qualifications to see if your child/family qualifies for the scholarships, before your child applies.

### *On-Line Scholarship Websites*

[www.fastweb.com](http://www.fastweb.com)  
[www.hesc.ny.gov](http://www.hesc.ny.gov)  
[www.collegexpress.com](http://www.collegexpress.com)  
[www.scholarships.com](http://www.scholarships.com)  
[www.studentscholarshipsearch.com](http://www.studentscholarshipsearch.com)  
[www.chegg.com](http://www.chegg.com)  
[www.bigfuture.collegeboard.org/scholarship-search](http://www.bigfuture.collegeboard.org/scholarship-search)  
[www.cappex.com/scholarships](http://www.cappex.com/scholarships)  
[www.goingmerry.com](http://www.goingmerry.com)

### *Virtual College Tour Websites*

[www.campus360tours.com](http://www.campus360tours.com)  
[www.mycollegevisitguide.com](http://www.mycollegevisitguide.com)  
[www.campustours.com](http://www.campustours.com)

## SELECTIVE SERVICE/ DRAFT REGISTRATION

1. **All male citizens of the United States are required to register with the Selective Service within 30 days of their 18th birthday.** *Registration forms are available at the post office or at [www.sss.gov](http://www.sss.gov).* Federal financial aid programs for college will be withheld from students who fail to comply.

### DATES TO REMEMBER

#### SAT Testing Dates

March 9, 2024

May 4, 2024

June 1, 2024

#### Registration Deadline

February 23, 2024

April 19, 2024

May 17, 2024

#### ACT Testing Dates

February 10, 2024

April 13, 2024

June 8, 2024

#### Registration Deadline

January 5, 2024

March 8, 2024

May 3, 2024

***Juniors:*** You should be taking at least one of these exams in April, May or June. Don't forget to sign up, by going to the College Board website for the SAT or the ACT website. Please make sure you can see your WHOLE face, wearing no hats or sunglasses in the picture. You cannot have anyone else in the picture with you. If you do not meet the guidelines, you will not be let into the test.

**Newcomb Central School CEEB Code is: 333-330.** You will need to know that when you register to take the exams, so that I will receive your test scores.

### Reminder to parents of 3<sup>rd</sup> through 8<sup>th</sup> grade students

New York State testing will be in April and May. If you can help it, ***please make sure your child does not miss school on the day of an exam.*** These exams will be very difficult to make up. Please review the schedule below. Thank you for your support.

3-8 ELA test: April 16-18, 2024

3-8 Math Tests: April 30- May 2, 2024

5 & 8 Science tests: May 14-16, 2024

### Students in grades 6<sup>th</sup> through 11<sup>th</sup>

I will be calling you in to meet with me in February/March/April to discuss next year's classes. I recommend that you talk with your parents to discuss any changes you would like to make in the classes you take next year, especially if you are not planning to take another year of science, math, foreign language, etc. Different diplomas require certain classes, so I will call your parents before I allow that.

Have a wonderful winter break! Try to get outside and do some mindfulness activities to stay healthy.  
Mrs. Markwica

**BREAKFAST**

**FEBRUARY 2024**

NEWCOMB CENTRAL SCHOOL

(518)582-3341 Ext #1021

Eleanor "Ellie" Yandon  
Kitchen Manager  
eyandon1@newcombsd.org

**Monday**



**5**  
Oatmeal  
OR Cereal  
FF or 1% White Milk 8oz  
100% Fruit Juice & Fruit (=8oz)  
Yogurt 4oz & WG Muffin 2oz

**12**  
Oatmeal  
OR Cereal  
FF or 1% White Milk 8oz  
100% Fruit Juice & Fruit (=8oz)  
Yogurt 4oz & WG Muffin 2oz

**19**  
HOLIDAY  
PRESIDENTS  
BIRTHDAY  
NO SCHOOL

**26**  
Oatmeal  
OR Cereal  
FF or 1% White Milk 8oz  
100% Fruit Juice & Fruit (=8oz)  
Yogurt 4oz & WG Muffin 2oz

**Tuesday**



**6**  
WG Husky Sandwich  
OR Cereal  
FF or 1% White Milk 8oz  
100% Fruit Juice & Fruit (=8oz)  
Yogurt 4oz & WG Muffin 2oz

**13**  
WG Husky Sandwich  
OR Cereal  
FF or 1% White Milk 8oz  
100% Fruit Juice & Fruit (=8oz)  
Yogurt 4oz & WG Muffin 2oz

**20**  
NO SCHOOL  
WINTER BREAK

**27**  
WG Husky Sandwich  
OR Cereal  
FF or 1% White Milk 8oz  
100% Fruit Juice & Fruit (=8oz)  
Yogurt 4oz & WG Muffin 2oz

**Wednesday**



**7**  
WG Bagels W/Crm.Cheese  
OR Cereal  
FF or 1% White Milk 8oz  
100% Fruit Juice & Fruit (=8oz)  
Yogurt 4oz & WG Muffin 2oz

**14**  
WG Bagels W/Crm.Cheese  
OR Cereal  
FF or 1% White Milk 8oz  
100% Fruit Juice & Fruit (=8oz)  
Yogurt 4oz & WG Muffin 2oz

**21**  
NO SCHOOL  
WINTER BREAK

**28**  
WG Bagels W/Crm.Cheese  
OR Cereal  
FF or 1% White Milk 8oz  
100% Fruit Juice & Fruit (=8oz)  
Yogurt 4oz & WG Muffin 2oz

**Thursday**

**1**  
Breakfast Egg Bowl  
OR Cereal  
FF or 1% White Milk 8oz  
100% Fruit Juice & Fruit (=8oz)  
Yogurt 4oz & WG Muffin 2oz

**8**  
Egg Quiche  
OR Cereal  
FF or 1% White Milk 8oz  
100% Fruit Juice & Fruit (=8oz)  
Yogurt 4oz & WG Muffin 2oz

**22**  
NO SCHOOL  
WINTER BREAK

**29**  
Breakfast Egg Bowl  
OR Cereal  
FF or 1% White Milk 8oz  
100% Fruit Juice & Fruit (=8oz)  
Yogurt 4oz & WG Muffin 2oz

**Friday**

**2**  
WG Waffles & Sausage  
OR Cereal  
FF or 1% White Milk 8oz  
100% Fruit Juice & Fruit (=8oz)  
Yogurt 4oz & WG Muffin 2oz

**9**  
WG Frnch Tst & Sausage  
OR Cereal  
FF or 1% White Milk 8oz  
100% Fruit Juice & Fruit (=8oz)  
Yogurt 4oz & WG Muffin 2oz

**16**  
WG Pancakes & Sausage  
OR Cereal  
FF or 1% White Milk 8oz  
100% Fruit Juice & Fruit (=8oz)  
Yogurt 4oz & WG Muffin 2oz



A Breakfast Alternative is served daily. Each Breakfast must contain; 8oz of Fruit +/- or 100% Fruit Juice, 2oz Meat or alternative, 2oz Grain. In the operation of National School Food Programs, no child will be discriminated against because of race, color, national origin, age or disability. If you believe you have been discriminated against, write immediately to the Department of Agriculture. Please note that our menu is subject to change based on availability of food items.





LUNCH

# FEBRUARY 2024 Newcomb Central School

Eleanor "Ellie" Yandon  
Kitchen Manager  
eyandon1@newcombsd.org  
(518)582-3341 Ext #1021

## Monday

**5**  
1% or FF Milk  
Cottage Cheese, Fruit  
Surf & Turf, Broccoli  
(Lobster Mac & Cheese w/  
Side of Pork)

**12**  
1% or FF Milk  
Cottage Cheese, Fruit  
Salad Bar  
Cheese Pizza  
Broccoli

**19**  
HOLIDAY  
PRESIDENTS  
BIRTHDAY  
NO SCHOOL

**26**  
1% or FF Milk  
Cottage Cheese, Fruit  
Salad Bar  
Broccoli Alfredo,  
Pasta

## Tuesday

**6**  
1% or FF Milk  
Cottage Cheese, Fruit  
Salad Bar  
Sloppy Nachos, Rice,  
Beans

**13**  
1% or FF Milk  
Cottage Cheese, Fruit

**20**  
NO SCHOOL  
WINTER BREAK

**27**  
1% or FF Milk  
Cottage Cheese, Fruit  
Salad Bar  
Quesadillas, Rice,  
Mexican Street Corn

## Wednesday

**7**  
1% or FF Milk  
Cottage Cheese, Fruit  
Salad Bar  
Tomato Soup, Grilled Cheese  
or Tuna Sandwich

**14**  
1% or FF Milk  
Cottage Cheese, Fruit  
Salad Bar  
Vegetable soup  
Bacon Chicken Ranch Wrap

**21**  
NO SCHOOL  
WINTER BREAK

**28**  
1% or FF Milk  
Cottage Cheese, Fruit  
Salad Bar  
Hot Wing Chicken Soup,  
Grilled Cheese

## Thursday

**1**  
1% or FF Milk  
Cottage Cheese, Fruit  
Salad Bar  
Baked Chicken, Mash Pot.  
Dinner Roll

**8**  
1% or FF Milk  
Cottage Cheese, Fruit  
Salad Bar  
Homemade Spaghetti O's  
Chicken Parmesan

**15**  
1% or FF Milk  
Cottage Cheese, Fruit  
Salad Bar  
Pierogis & Kielbasa  
Sauerkraut

**22**  
NO SCHOOL  
WINTER BREAK

**29**  
1% or FF Milk  
Cottage Cheese, Fruit  
Salad Bar  
Porcupine Balls,  
Bread Sticks

## Friday

**2**  
1% or FF Milk  
Cottage Cheese, Fruit  
Crabby Pattty w/ Cheese  
On Bun, Pea Salad  
Swt Pot. Fries,

**9**  
1% or FF Milk  
Cottage Cheese, Fruit  
Sloppy Joes w/ Cheese  
Swt. Pot. Fries  
Beets

**16**  
1% or FF Milk  
Cottage Cheese, Fruit  
Cowboy Chuck Burger  
w/Cheese, Tators  
Cowboy corn Salad

**23**  
Salad Bar  
Tator Tot/Rice Bar  
Taco Meat, Bean

NO SCHOOL  
WINTER BREAK



This Month's Menu was Created by the  
Elementary students of NCS.

**LUNCH ALTERNATIVE DAILY: Whole Grain Sandwich, Milk, Fruit, Vegetable and Cheese Stick. In the operation of National School Food Programs, no child will be discriminated against because of race, color, national origin, age or disability. If you believe you have been discriminated against, write immediately to the Department of Agriculture. Please note that our menu is subject to change based on availability of food items.**

# CLASS NEWS



## Fun with Fractions!

This month, the 3rd and 5th graders are working with fractions. The 3rd graders are learning about numerations, denominators, unit fractions, equivalent fractions, and how to draw a fraction on a number line. Their next steps will be to add and subtract fractions. The 5th graders are working on adding, subtracting, converting, simplifying, and multiplying fractions. Next week, we will begin dividing fractions using the "copy, change, flip" method. Thank you again for your continuous support in your students' education. They are rocking it out of the park! :)

-Ms. Armstrong





# February 2024



Directions: Keep your speech and language skills sharp! Color in each square as you complete the activity. See how many you can complete this month!

| SUNDAY  | MONDAY   | TUESDAY  | WEDNESDAY  | THURSDAY  | FRIDAY  | GROUNDHOG DAY   | SATURDAY  |
|---|--|--|--|---|---|---|---|
| Jan 28  | 29   | 30   | 31   | February 1  | 2   | 3   | 3   |
| <b>Multiple Meanings</b><br>Multiple meaning words are words that have more than one meaning.         | Give two meanings of the word...<br><b>bowl</b>  | Give two meanings of the word...<br><b>sink</b>  | Give two meanings of the word...<br><b>bat</b>   | Give two meanings of the word...<br><b>left</b>   | Give two meanings of the word...<br><b>club</b>                           | Check out this product:<br><b>Multiple Meanings Photo Fun Deck</b><br>Item #FD-322            | Check out this product:<br><b>Chinabee New Year</b><br>Item #A1A-76                           |
| <b>Artic F</b><br>To make the F-sound, touch your bottom lip to your top teeth.                       | Repeat the Sentence<br>Phyllis fixed the broken faucet at the cafe.                      | Repeat the Sentence<br>Goofy the gopher hit the golf ball far.   | Repeat the Sentence<br>My father, the chef, won a trophy for the best waffles ever.          | Repeat the Sentence<br>Jeff the giraffe is stuck in a traffic jam.  | Repeat the Sentence<br>The lifeguard laughed when the snow fell in July.  | Check out this product:<br><b>Anytime Artic Card Game - 2</b><br>Item #A1A-76                 | Check out this product:<br><b>Grammar Quick Take Along Mini-Book</b><br>Item #TA-340          |
| <b>Super Bowl Sunday</b> 11   | <b>Give 3</b><br>Describing Words<br>_____, _____, _____<br>monster                      | <b>Give 2</b><br>Describing Words<br>_____, _____, _____<br>skunk  | <b>Give 1</b><br>Describing Word<br>_____ cup of soup  | <b>Give 2</b><br>Describing Words<br>_____, _____, _____<br>syrup   | <b>Give 3</b><br>Describing Words<br>_____, _____, _____<br>snow          | Check out this product:<br><b>Webber Photo Cards</b><br>What Are They Saying?<br>Item #WFC-86 | Check out this product:<br><b>Webber Photo Cards</b><br>What Are They Saying?<br>Item #WFC-86 |
| <b>Perspective Taking</b><br>Perspective taking is understanding the thoughts and feelings of others. | Brooke told Melissa that she played a great tennis game. How did that make Melissa feel? | Kevin asked his parents if he could spend the night at a friend's house, and they said no. How did Kevin feel? | Jessica forgot to go to her best friend's birthday party. How did this make her friend feel? | At the dinner table, Josh interrupts his family's conversation to talk about his basketball game. How does that make the others feel? | David notices that Susie got an A+ on her math test. How does Susie feel? | Check out this product:<br><b>Webber Photo Cards</b><br>What Are They Saying?<br>Item #WFC-86 | Check out this product:<br><b>Webber Photo Cards</b><br>What Are They Saying?<br>Item #WFC-86 |
| <b>Categories</b><br>Categories are groups of items that share the same qualities.                    | <b>What Doesn't Belong?</b><br>butterfly<br>owl<br>taco                                  | <b>Name That Category</b><br>train<br>motorcycle<br>fire truck   | <b>What Doesn't Belong?</b><br>dress<br>shirt<br>bus   | <b>Name That Category</b><br>stove<br>toilet<br>garbage can   | <b>What Doesn't Belong?</b><br>bathtub<br>cookie<br>french fries          | Check out this product:<br><b>Webber Photo Cards</b><br>What Are They Saying?<br>Item #WFC-86 | Check out this product:<br><b>Webber Photo Cards</b><br>What Are They Saying?<br>Item #WFC-86 |
| 25  | 26   | 27   | 28   | 29  | March 1   | 2   | 2   |
| <b>Webber BIG Box of Hidden Pictures for Vocabulary</b><br>Item #BB-216                               | <b>Webber BIG Box of Hidden Pictures for Vocabulary</b><br>Item #BB-216                  | <b>Webber BIG Box of Hidden Pictures for Vocabulary</b><br>Item #BB-216  | <b>Webber BIG Box of Hidden Pictures for Vocabulary</b><br>Item #BB-216                      | <b>Webber BIG Box of Hidden Pictures for Vocabulary</b><br>Item #BB-216   | <b>Webber BIG Box of Hidden Pictures for Vocabulary</b><br>Item #BB-216   | <b>Webber BIG Box of Hidden Pictures for Vocabulary</b><br>Item #BB-216                       | <b>Webber BIG Box of Hidden Pictures for Vocabulary</b><br>Item #BB-216                       |

Answer Key: February 26) taco 27) transportation 28) bus 29) around the home March 1) bathtub

# SPORTS NEWS

## NFHS Basketball Livestream

Dear friends, family and supporters of Newcomb's Student Athletes,

Newcomb Central School District has recently acquired a system to make our Newcomb home basketball games available to the public for Modified, JV and Varsity Teams!

For a monthly subscription of \$11.99 a month, of which you can cancel at any time, you will have access to all Newcomb home and away games that are played in the MVAC. If you follow the instructions below you can login and support Newcomb's athletes online anywhere you have a phone or computer.

### Instructions:

1. First use this URL to get to the NFHS website: [nfhsnetwork.com](http://nfhsnetwork.com)
2. At the top of the screen search for "Newcomb Central High School, Newcomb NY"
3. Once you have found the Newcomb page, you can scroll down and find the live or recorded game that you want to watch and select by clicking on it.
4. After you have found your game click subscribe now. The site will ask you to make an account, which you can buy a subscription for \$11.99 a month.
5. Once finished making an account you will be able to tune into your team's basketball live stream or any previously recorded games.



Please visit our website to view the most recent schedule for basketball games:

**<https://www.newcombcsd.org/athletics>**

# Going for GOLD!

## The undefeated season



This year, eight brave girls have been battling for a place at the top. The Newcomb Huskies girls modified basketball team is going undefeated with only a few games left. What's their secret? First year modified player, Grace Hlavaty says, "playing with the same people is important to me." A fitting reply after having an outstanding game against Johnsburg/Minerva the night before. Likewise, a very humble but talented Piper Larabee mentioned that she thinks they're doing "pretty good". An understatement to say the least, the ladies are averaging 10 point leads per game which is no small task. After spending some time with these athletes, you can tell there is an unbreakable bond between the team. Maybe it's the work ethic, maybe it's the time commitment or maybe it's their school pride. Regardless, the Newcomb Huskies demonstrate what it truly means to be a student athlete at Newcomb Central School. Former student athlete and alumni Coach Armstrong had this to say, "we just take it game by game." If you are interested in going to any of their games, please check the calendar on the Newcomb Central School website. You won't regret it!





Want to spoil your Valentine,  
your mom or even your best  
friend?



Class of 2026 is selling white, milk, and dark  
chocolate covered strawberries

\$5 for ½ dozen      \$10 for a dozen

Orders due by February 9<sup>th</sup>  
Pick up is February 13<sup>th</sup> from 3pm-4pm at NCS

Contact The Class of 2026 for more info.

Email Whitney Britt at [wbritt@newcombcasd.org](mailto:wbritt@newcombcasd.org) or  
call 518-582-3341 ext. 1008

# IN OTHER NEWS

## COMING SOON!

*Monday, April 8th is the day Newcomb will experience a total solar eclipse.*

While we hope this event will be enjoyed by many visitors to our town, first and foremost we want this experience to be a community event.

Events the weekend of April 6 and 7 will get everyone ready for this once in a lifetime happening.

On Saturday, join staff at the Adirondack Interpretive Center (AIC) for children's activities from 10 am to 4 pm. At 1 pm a film about the 2017 total solar eclipse will be shown.

These activities will continue at the AIC on Sunday as well. Also on Sunday at 1 pm, Professor Luke Keller, from Ithaca College, will present basic facts about eclipses. At 3 pm the film about the 2017 total solar eclipse will be replayed.

On Sunday night, we invite everyone to the Newcomb Fire Hall for a Lights Out Chili Cookoff from 5-8 pm. You have two ways to participate - make some chili for tasting or just be a taster. Of course, you can also do both! Call Jill Vallee at 518-791-7479 or Email [crandallkid@verizon.net](mailto:crandallkid@verizon.net) if you'll be making chili for the cookoff.

The main event happens Monday afternoon. The moon will start to eclipse the sun at 2:14 pm. Its shadow will totally cover the sun for nearly 3 minutes beginning at 3:25.

Community and guests plan to gather behind the Information Center beginning at 1:30. There will be music, children's activities and food. If you want to attend but don't have a way to get there, let us know and we'll arrange for the town van to pick you up! We don't want anyone to miss this spectacular occurrence.

Watch for a direct mailing to everyone in Newcomb coming soon!

Newcomb Eclipse Committee: Dave Hughes, Mary Lamphear, Kathryn Behuniak, Jill Vallee, Wilkes Jordan, Stephanie Hample, Jackie LaCourse, Sandy Bureau, Mary Ellen Adams, Ann Burns, Isabelle Bureau, Kelly Audino, Hilary Primo



# UPCOMING IN THE DISTRICT

## February 2024

15 Board of Education Meeting, 6pm  
19-23 NO SCHOOL - Winter Recess

## March 2024

8 Mid-Marking Period  
14 Board of Education Meeting, 6pm  
29 NO SCHOOL - Good Friday

NEWCOMB CENTRAL SCHOOL DISTRICT  
P.O. Box 418  
5535 STATE ROUTE 28N  
NEWCOMB, NY 12852

Phone: 518-582-3341  
Fax: 518-582-2163  
[www.newcombcasd.org](http://www.newcombcasd.org)

SUPERINTENDENT  
CHRISTIAN M. FISHER

NON-PROFIT ORG.  
U.S. POSTAGE  
**PAID**  
NEWCOMB, NY 12852  
PERMIT #3

Boxholder  
or  
Rural Route